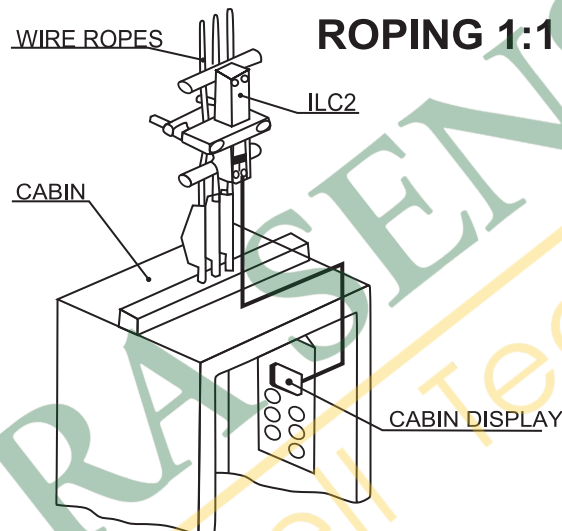
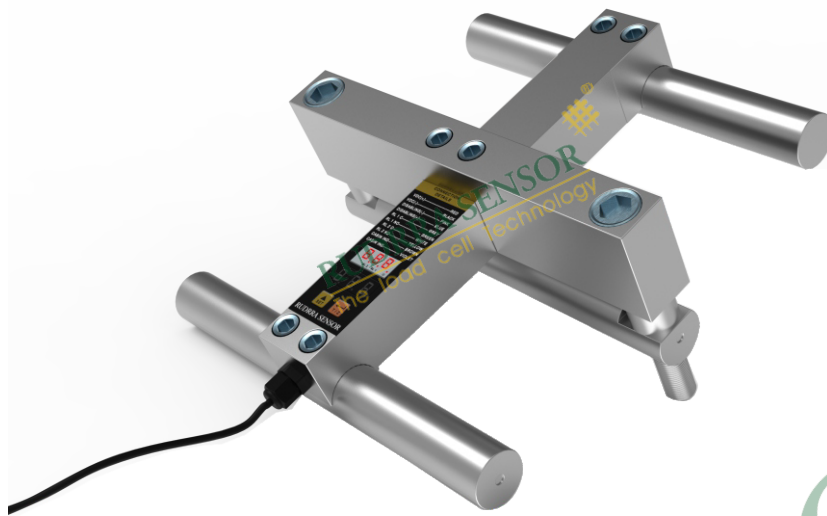


RSL 307N (Multi Rope type)

Overload Sensor

RUDRRA SENSOR

The load cell Technology



Product Description

The Overload sensor (1:1) intelligent wire rope sensor is an easy and precise solution for controlling the load in traction lift. It is quick easy to install and calibrat (5 mins.) through the diameter fo the ropes makes it the perfect. solution for lift modernizations in which the capacity is less than 999 Kg.

Features

- * Automatic calibration using the rope diameter
- * Quick and easy installation
- * Universal clamps for all types of rope distribution
- * 2 programmable relay output for Full load & Overload
- * Inbuilt seven segment display to show value up to 999 Kg
- * Internal data memory to store Parameter
- * 2 keys for programming all parameters
- * Suitable for 1:1 roped installations
- * Integrated SW to correct weight increases due to compensating chain

Specification

Supply Voltage	:	24-48 VDC
Disabling input	:	24-230 VAC/DC
Relay Contacts	:	250VAC 3A
Operating Capacity (RC)	:	3500 kg
Safe Load	:	150% RC
Operating Temperature	:	-10°C/50°C