

RSL 616

Button Type Load Cell

(High Capacity Compression Load Cell)

RUDRRA SENSOR

The load cell Technology



Product Description

Rudrra Sensor is representing high capacity compression load cell, it is one of the long lasting equipment. The model name of is RSL 616. it is also called button type load cell.

The aforementioned company is the leading manufacturer of this compression load cell. This model is perfectly suitable for industrial application. Depending on various industrial standards and the requirements of applications the models is designed. The company supplies quality load cells to cater the enhanced efficiency to the experiments.

Applications

- * Pharma machinery
- * Testing machinery
- * Point load analysis
- * Hopper or tank weighing

Key Features

- * It has the ability to protect against IP67
- * Low profile
- * It is suitable for industrial application for point load
- * It is highly free of interface
- * It is explosion proof where the version is Ex ib || Ct4

Optional :

- * Digital Load cell
- * Stainless steel structure
- * Mounting assembly for hopper weighing



RSL 616

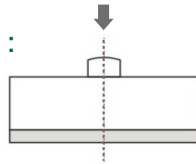
Button Type Load Cell

(High Capacity Compression Load Cell)

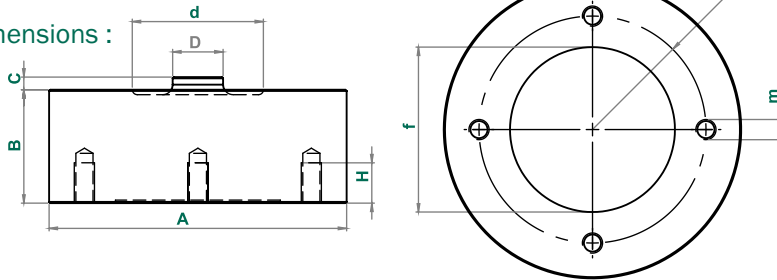
RUDRRA SENSOR

The load cell Technology

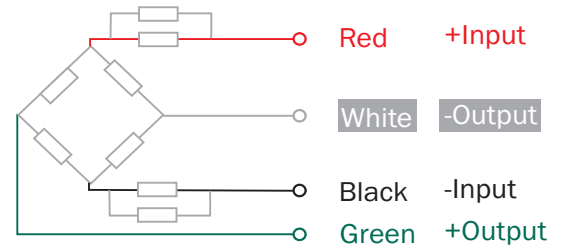
Load Application Layout :



Dimensions :



Cable Connection Details :



Capacity	A	B	C	D	d	F	E	M	H
200, 500, 1000kg	50	25	5	13	32	34	42	M4*0.7	10
2T, 3T, 5T	60	30	5	12	36	42.5	50	M6*1	12
10T to 20T	118	45	7	20	52	65.4	90	M8*1.25	16
30T, 50T	155	50	5	44	90	103	125	M12*1.75	20
100T	205	60	7.5	65	130	145	165	M16*1.5	25

* All dimension are in mm

Parameters : (Analog Load Cell)

Related Load (kg.) 100kg to 100Ton			
Precision	C2	Insulation Resistance(MΩ)	≥ 5000(100VDC)
Composition Error	0.03	Excitation Voltage (V) (Regulated)	5~15V (DC)
Rated Output (mv/v)	2.0 ± 2%	Compensated temp. Range (°C)	-10~+40
Non-Linearity (%FS)	0.03 / 0.017	Use Temp. Range (°C)	-35~+65
Hysteresis (%FS)	0.03 / 0.02	Temp. Effect on Zero (%FS/10°C)	0.03 / 0.017
Repeatability (%FS)	0.01	Temp. Effect on Span (%FS/10°C)	0.03 / 0.017
Creep (%FS/30min)	0.02	Safe Overload (%FS)	120
Zero Balance (%FS)	± 2	Ultimate Overload (%FS)	200%
Input Resistance (Ω)	750 ± 10	Defend Grade	IP67 / IP68
Output Resistance (Ω)	700 ± 2	Cable	6mm, 5mtr

