

RS - 101

Load Indicator

RUDRRA SENSOR

The load cell Technology



Product Description

We are counted among the leaders in manufacturing and supplying Load Indicators. We provide a perfect custom solution for our client's specific need. We never compromise with quality of product.

Rudrra sensor manufacture and supply high and premium quality load indicator which is manual and auto tare control, 6 digit display, field programming with non-volatile memory.

Our load indicator has high strength and ensures longevity. Special desired requirement also welcomed by Rudrra sensor. Our products are always demanded in the market due to their optimum performance, chemical and impact resistance, durability, aluminium manufactured. We design our products by keeping in mind the special need of our customers.

Applications

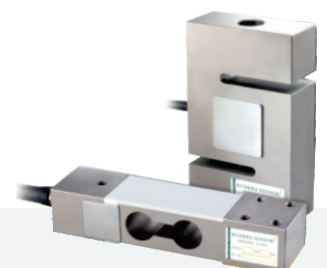
- * Tension compression testing
- * Peak load testing
- * Breaking point testing
- * Weight Indicator
- * Test Equipment

Key Features

- * 6 Digit Display
- * 0.05% of full scale accuracy
- * Manual or Auto tare control
- * Kg/N Conversion
- * Panel Mount Industrial Grade Cabinet
- * Field programmatic with non volatile memory
- * Power Supply : 230VAC, 50HZ

Optional :

- * High Precision control on request
- * Table Top or Panel Mount Cabinet
- * Peak Hold Display, RS-232C Port
- * Serial or Parallel port for Computer or Printer Interface

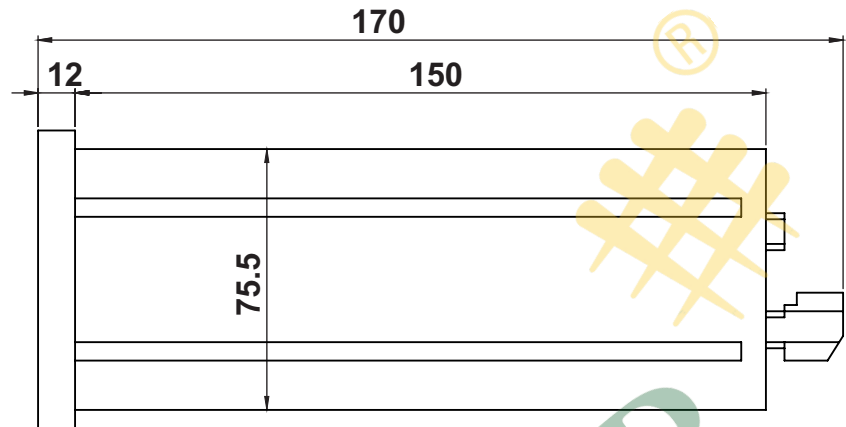
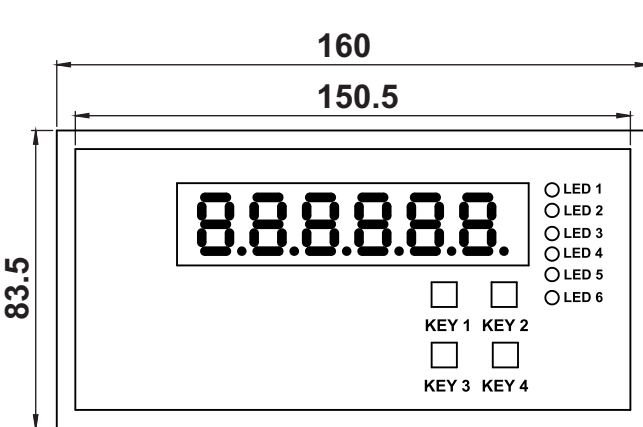


RS - 101

Load Indicator

RUDRRA SENSOR

The load cell Technology



Technical Specifications Table

GENERAL	
Power Supply	220 VAC
Inputs	2 Units Analog (Power Supply, Load cell)
Outputs	RS-232 UP to 4 Relay Output
DISPLAY	
Display	6 Digit 7 Segment Display
Display Step	x1,x2,x5,x10,x20,x50
Decimal Display	0.1,0.01,0.001,0.0001
Keypad	4 Units
A/D CONVERTOR	
Type Converting	24 bit Delta sigma
Speed Display	up to 600 sps (User Programmable)
Precision	1/1,00,000
FILTER AND CALIBRATION	
Digital Signal Filter	Programmable filter
Anti-Vibration Filter	Special Filter for Vibrated Environment
Parametric Calibration	Done While being connected to the Load cell with milivolt output
Weighted Calibration	With Standard Weights
LOAD CELL	
Power Supply	10 V DC
Number of Load Cells	4 units 350Ω or 8 units 700Ω
Input Resistance min	85Ω
Output Signal at Max Load	≤ 4 mV/V
Connection	Connection with 4 or 6-Core Cable
COMM.INTERFACE	
Serial Port	RS 232
AMBIENT AND EQUIPMENT	
Operating Temperature	-10°C ~ +40°C
Humidity	%85
Box	Panel Mounted Aluminium Encloser

