

RSL 112RND

Silo Weighing Load Cell

RUDRRA SENSOR

The load cell Technology



Product Description

Rudrra Sensor bequeath featured products to their clientele and in plunge by deliver products with abreast technology and impeccable working. We give idiosyncratic attention on the individualistic progress of all necessary technology and core competencies. This objective empower us to transport at curate note and to administer distinctive key for our customers.

Rudrra Sensor is a maker of inclusive range of Dual Shear Beam Load Cell. The usage of superlative quality materials in the manufacturing of the Dual ended load cells guarantee noteworthy characteristic like it is immensely persistent and tensile strength. Furthermore, purchasers are satisfied with the opportunity to get it in multifarious specifications & affordable price.

This is an opportune fusion of two single-ended load cells into one tangible tool, giving the favor of higher loading capacity and higher resistance to off centre loads and side forces.

The dual shear beam load cells are most often applied for high capacity installations such as silos, tanks, truck scales (weighbridges), railway scales and other heavy industrial processes.

Rudrra Sensor entrenched in 2002. And We have 16 years of experience in exporting and manufacturing of load cells. These model are named RSL 112RND.

Applications

- * Truck, Tank and Hopper Weighing
- * Cylo weighing
- * Weighbridge

Key Features

- * 2Tf to 30Tf Capacities
- * Triple-Sealing
- * Electroless Nickel Plated

Optional :

- * Digital Load cell
- * Stainless steel structure
- * Load cell mounting assembly provided on request.



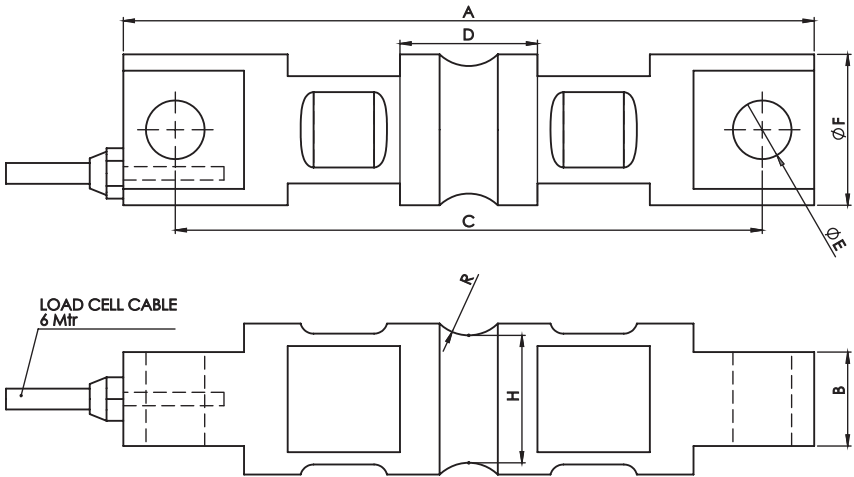
RSL 112RND

Silo Weighing Load Cell

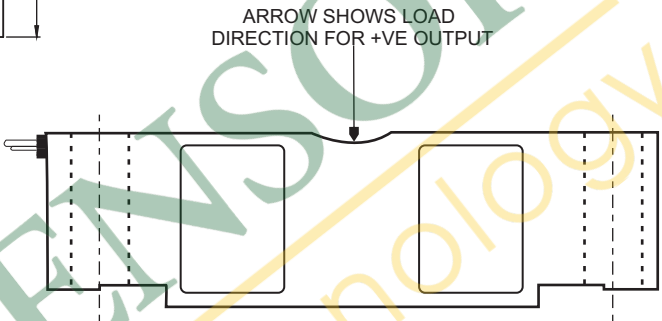
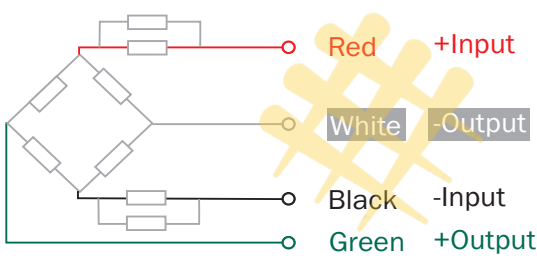
RUDRRA SENSOR

The load cell Technology

Dimensions :



Cable Connection Details :



CAPACITY	A	B	C	D	E	F	G	H
2T, 5T, 7.5T, 10T	206	28	175	41	17	45	12.5	38
20T To 30T	260	60	216	35	25	78	25	70

Parameters : (Analog Load Cell)

Standard Capacities (tf.) 2 / 5 / 7.5 / 10 / 20 / 30			
Voltage	10 VDC - Maximum 15 VDC	Ultimate Overload	200% of Rated Capacity
Nominal Output	3.0 m V/V	Allowable Side Load	50% of Rated Capacity
Non-Linearity	± 0.025% FSO (Full Scale Output)	Side Load Discrimination	500:1
Hysteresis	± 0.02% FSO	Temperature Compensated Range(°C)	-10~+40
Non-Repeatability	± 0.01% FSO	Temperature Effect on Output (°C)	<0.0015% FSO/
Creep (30min)	700 ± 10	Temperature Effect on Zero (°C)	<0.0020% FSO/C
Zero Balance	750 ± 20.0(Ω)	Deflection	<0.05 mm at FSO
Input Resistance	≥ 20000 Mega Ohms at 50 VDC	Tightening Torque	10 m. kg.
Output Resistance	700 ± 7.0(Ω)	Construction	Electroless Nickel Plated Tool Steel
Safe Overload	150% of Rated Capacity	Environmental Protection Class	1P68

