

RSL 304

Tension Load Cell

RUDRRA SENSOR

The load cell Technology



Product Description

Rudrra sensor is one of the leading company who provide high quality tension load cell in ahmedabad. We are manufacturer of these product since last 16 years. Owing to our expertise in this field we glad to offer the most advanced model in this category, RSL 304. It is fabricated by our experts with global quality standards. It is having the rigid structure made up from supreme quality raw stuff in order to provide the best product at clients end, furthermore, our experts inspect it at different parameter to assure the quality standards. We are presenting the wide assortment of existing product to make it easy to choose the right one for customer's application. The sizes available from 1 ton up to 20 ton.

We are also recognized as the tension load cell supplier, we deliver this product in all around the world. Our most supportive and sound technical team always provide the great support to our consumers. This products are well-liked by our clients for its rigid rust proof body, accurate designs and easy working procedure. The all technical details and diagrams are given in below charts.

Applications

- * Suitable for Hanging scale
- * Vibratory feeding equipment
- * Tension testing machine
- * Tank weighing, hopper weighing etc.

Key Features

- * Alloy steel construction
- * Glue sealing and welding to IP67 & IP68
- * Easy to install and use for both tensile and compression application, inbuilt overload safety .

Optional :

- * Digital Load cell
- * Stainless steel structure

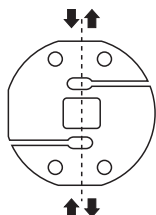
RSL 304

Tension Load Cell

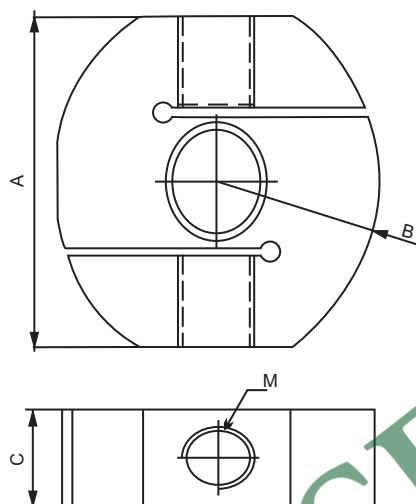
RUDRRA SENSOR

The load cell Technology

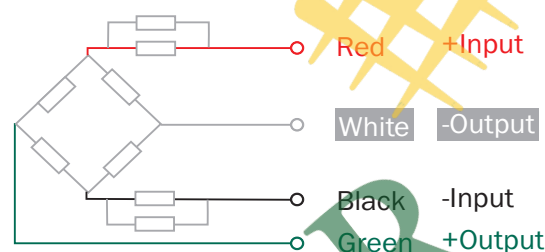
Load Application Layout :



Dimensions :



Cable Connection Details :



CAPACITY	A	B	C	M
5t, 7.5t	90	102	45	M24*2mm
10t	135	147	60	M30*2mm
15t, 20t	182	198	75	M36*3mm

* All dimension are in mm

Parameters : (Analog Load Cell)

Related Load (Ton) : 5 / 7.5 / 10 / 20			
Precision	C2	Excitation Voltage (V)	5~12 (DC)
Composition Error	± 0.03	Compensated temp. Range (°C)	-10~+40
Rated Output (mv/v)	2.0 ± 0.004	Use Temp. Range (°C)	-10~+40
Creep (%FS/30min)	± 0.03	Temp. Effect on Zero (%FS/10°C)	± 0.023
Zero Balance (%FS)	1.0	Temp. Effect on Span (%FS/10°C)	± 0.017
Input Resistance (Ω)	390 ± 5	Safe Overload (%FS)	150
Output Resistance (Ω)	350 ± 2	Ultimate Overload (%FS)	200
Insulation Resistance (M Ω)	5000	Defend Grade	IP67

