

RSL 203

Pancake Load Cell (Testing Machine Load Cell)



Product Description

The testing machine requires smart scale with the ability to calculate the parameters accurately. And in this regard, testing machine Load Cell is another suitable appliance that is manufactured with the latest and advanced technology. The model name of this machine is RSL 203. It is easy enough to install and suitable for work in multiform environmental condition.

The collection of testing machine load cell is configured with the tough body. Moreover, it is packed with a user-friendly design. The products are manufactured with quality product material to ensure the final quality of this product before final supply to the customers.

Applications

- * Electronic Truck Scales
- * Hooper Scales
- * Pile testing machine
- * UTM testing machine
- * Customized applications testing machine

Key Features

- * Alloy steel & Stainless steel structure
- * Nickel plated
- * Suitable for multiform environments
- * Easy to Install & Use

Optional :

- * Digital Load cell
- * Stainless steel structure

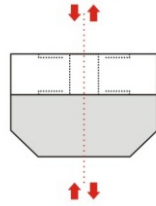


RSL 203

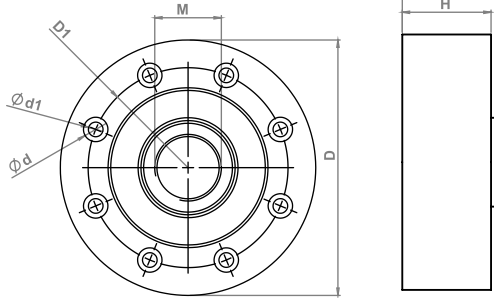
Pancake Load Cell (Testing Machine Load Cell)

RUDRRA SENSOR
The load cell Technology

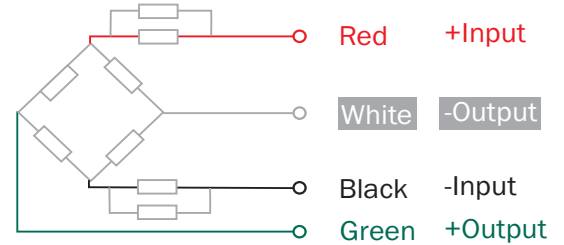
Load Application Layout :



Dimensions :



Cable Connection Details :



Capacity	D	D1	d1	d	M	H	H1
200kg to 5000kg	105	90	6.6*8	11	M16*1.5	32	36
10000kg & 15000kg	115	90	6.6*8	11	M30*2	40	42
10T & 15T (TTM)	115	90	11*8	11	M30*2	40	42
20T to 30T	155	125	13.5*8	20	M39*2	50	52
50T	205	165	17.5*8	26	M48*2	60	65
100T	280	222	17.5*16	26	M72*2	90	95

* All dimension are in mm

Parameters : (Analog Load Cell)

Related Load (Ton) 0.2 / 0.5 / 1 / 2 / 3 / 5 / 10 / 20 / 30 / 50 / 100			
Precision	C2	Insulation Resistance(MΩ)	≥ 5000(100VDC)
Composition Error	± 0.03	Excitation Voltage (V)	5~12 (DC)
Rated Output (mv/v)	2 ± 0.008	Compensated temp. Range (°C)	-10~+40
Non-Linearity (%FS)	0.017	Use Temp. Range (°C)	-20~+55
Hysteresis (%FS)	0.02	Temp. Effect on Zero (%FS/10°C)	0.05
Repeatability (%FS)	0.01	Temp. Effect on Span (%FS/10°C)	0.03
Creep (%FS/30min)	0.03	Safe Overload (%FS)	150
Zero Balance (%FS)	± 1	Ultimate Overload (%FS)	200
Input Resistance (Ω)	750 ± 10	Defend Grade	IP67 / IP68
Output Resistance (Ω)	700 ± 5	Cable	6mm, 10mtr

