

RS - 102

Load Indicator

RUDRRA SENSOR

The load cell Technology



Product Description

Rudrra sensor's Load Cell Indicator RS-102 is highly appreciated by end users & system integrator. Due to sturdy and aluminium construction it has more rigidity in all kind of application. RS-102 has inbuilt 0.58 inch seven segment display with for key for radius settings & calibration of the system. This weighing controller has wide input supply range from 85 VAC to 280 VAC with inbuilt isolation, added with four potential free relay o/p, 2 digital i/p, modbus-485, Rs 232 and Analogue o/p of 0-10VDC, 0-5VDC, 4-20mA, 0-20mA with software selection.

Applications

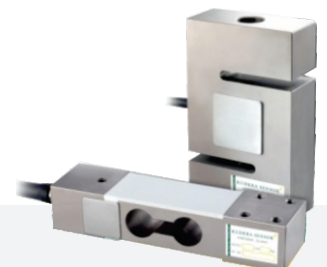
- * Batch control
- * Automatic industrial feeding system
- * Packaging machine
- * Weight indicator
- * Test Equipment
- * Force, Torque, stress and pressure Measurement

Key Features

- * Wide range of supply voltage -85VAC to 250VAC
- * 75x150 wide panel mounting arrangement
- * Plug play connector
- * 24 bit internal resolving with digital filters
- * Direct o/p of Rs-232b Rs-485, Analogue output
- * Connect up to 4 Load cell 350 & 8 Load cell of 700
- * Easy setup

Optional :

- * Rs-102 - 4Relius 1 I/p
- * Rs-102 + 4 Relay + 1 i/p + mpdbus
- * Rs-102 + 4 Relay + 1 i/p + Out
- * Rs-102 + 4 Relay + 1 i/p + Out + modbus

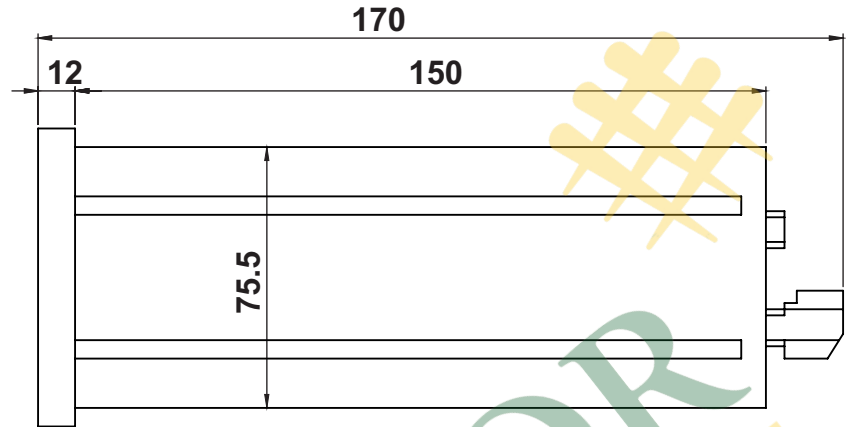
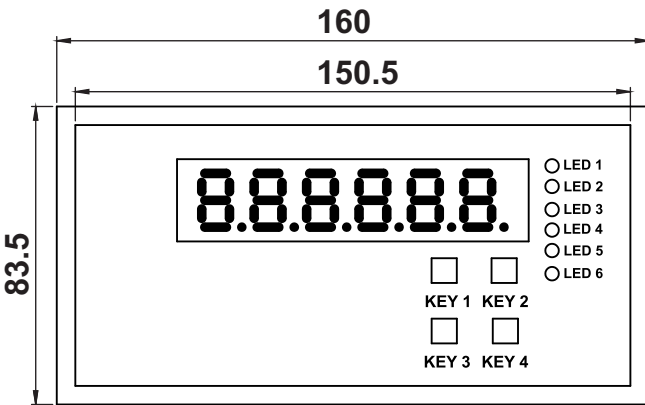


RS - 102

Load Indicator

RUDRRA SENSOR

The load cell Technology



Technical Specifications Table

GENERAL	
Power Supply	100-240 A.C
Inputs	2 Units Analog (Power Supply, Load cell)
Outputs	16 Bit Analog Output(0-5V,0-10V,4-20mA,0-20mA,0-24mA)
	Modbus RTU(Rs485)
	RS-232
	UP to 4 Relay Output
DISPLAY	
Display	7 Segment Display
Display Step	x1,x2,x5,x10,x20,x50
Decimal Display	0.1,0.01,0.001,0.0001
Keypad	4 Units
A/D CONVERTOR	
Type Converting	24 bit Delta sigma
Speed Display	600 sps
Precision	1/1,00,000
FILTER AND CALIBRATION	
Digital Signal Filter	Programmable filter
Anti-Vibration Filter	Special Filter for Vibrated Environment
Parametric Calibration	Done While being connected to the Load cell with millivolt output
Weighted Calibration	With Standard Weights
LOAD CELL	
Power Supply	10 V DC
Number of Load Cells	4 units 350Ω or 8 units 700Ω
Input Resistance min	85Ω
Output Signal at Max Load	≤ 4 mV/V
Connection	Connection with 4 or 6-Core Cable
COMM.INTERFACE	
Serial Port	RS 485,RS 232
AMBIENT AND EQUIPMENT	
Operating Temperature	-10 °C ~ +40 °C
Humidity	%85
Box	Panel Mounted Aluminium Encloser

