

RTN-C

HIGH CAPACITY COMPRESSIN LOAD CELL

RUDRRA SENSOR

The load cell Technology



Product Description

RTN ring torion load cells are available for a wide range of maximum capacities (1t-500t). All versions are compact and, at the same time, extremely robust. These properties and their superior degree of protection make them ideal for a wide range of container weighing applications and the construction of vehicle scales and high capacity UTM.

Features :

- * Corrosion-resistant load cell made of stainless steel
- * Resistant to chemicals and moisture
- * Wide temperature range from -30 *C to +80 *C (optionally up to +110 *C)
- * High precision and high signal-to-noise ratio, due to the 2.00 mV/V output signal
- * Available with connector
- * Compact design, very low in height
- * Adjusted cable lengths



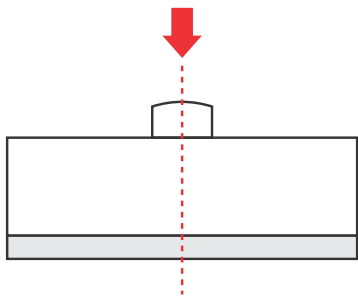
RTN-C

HIGH CAPACITY COMPRESSIN LOAD CELL

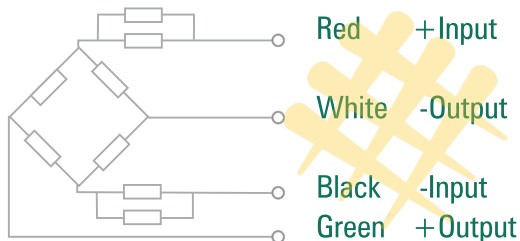
RUDRRA SENSOR

The load cell Technology

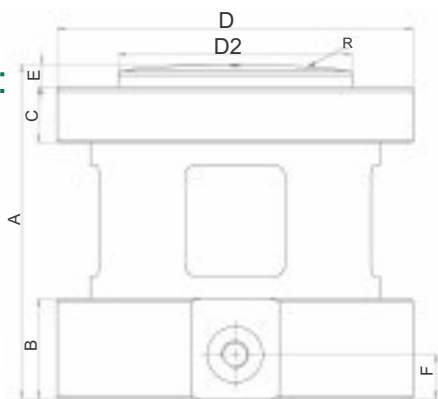
Load Diagram :



Wiring Schematic Diagram :



Dimensions :



Cap (Ton)	A	B	C	D	E	F	D2	R	Weight
100	150	38	22	150	10	20	75	200	14kg
100., 150., 200T	150	45	25	160	10	20	150	500	18kg

*500T/1000T Dimension Available on Request

Parameter	C3	Unit
Rated load (Emax):	50, 100, 200, 300, 500	T
Maximal numbers of load cell verification Intervals (NIc):	3000	d
Minimum load cell Verification intervals Intervals (Vmin):	1%	% of rated load
Rated output (Cn):	2.0 + 0.1%	mV/V
*Combined error:	0.05	± % of rated output
Temperature effect on sensitivity (Tkc):	0.02	± % of rated output °C
Temperature effect on Zero balance (Tk0):	0.02	± % of rated output °C
Zero balance:	1.0	± % of rated output
Input balance (RIc):	750 + 5	Ω (Ohms)
Output resistance (Ro):	700 + 2	Ω (Ohms)
Insulation resistance:	> 20000 MΩ	M Ω (Mega-Ohms)
Safe overload:	150	± % of rated capacity
Ultimate overload:	200	± % of rated capacity
Operating temperature range:	-20 + 70	°C / °F
Recommend excitation:	8-12	V(DC or AC)
Maximum excitation:	24	V(DC or AC)
Material of elastomer:	Stainless Steel	
Protection class:	IP67/IP68	

